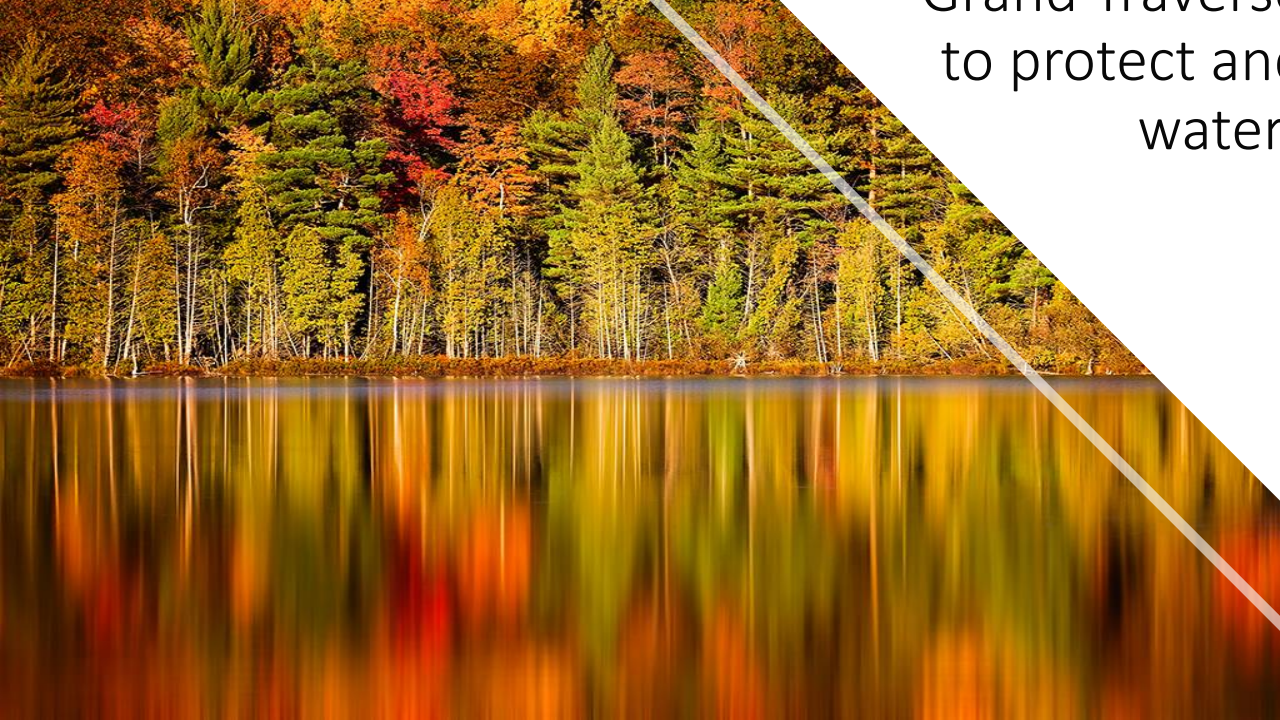


Boardman-Ottaway River Network

Christine Crissman | Executive Director

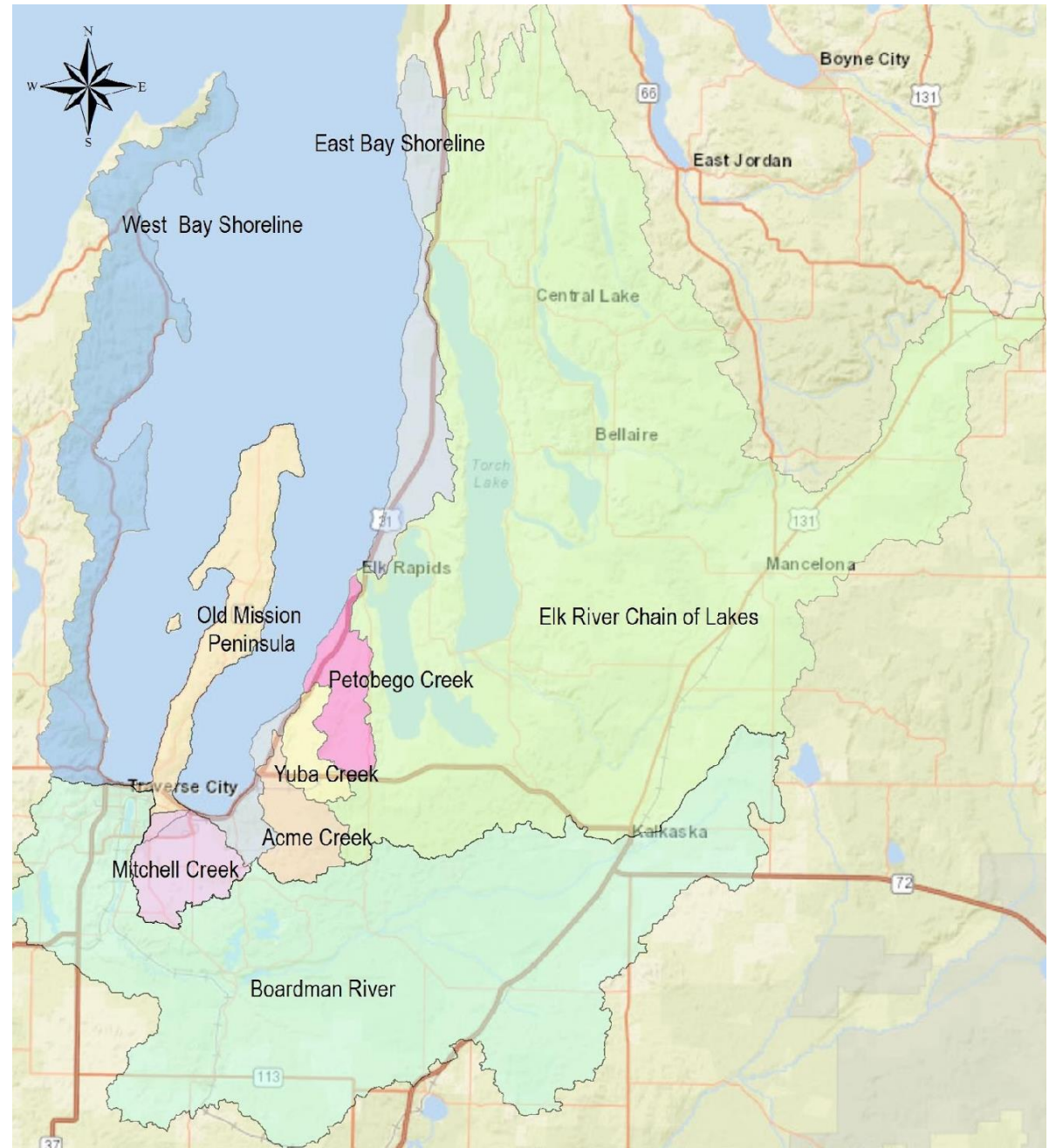




The Watershed Center
advocates for clean water in
Grand Traverse Bay and acts
to protect and preserve its
watershed.

Grand Traverse Bay Watershed

| | |
|----------------|---------------------|
| Land Area | 973 mi ² |
| Deepest Point | 620 ft |
| Shoreline | 132 mi |
| Widest Point | 10 mi |
| Counties | 4 |
| Townships | 44 |
| Municipalities | 11 |



THE BOARDMAN RIVER WATERSHED

Boardman River Tributaries & Inland Lakes

Data Sources: Michigan Geographic Data Library, Michigan DNR, Grand Traverse Conservation District

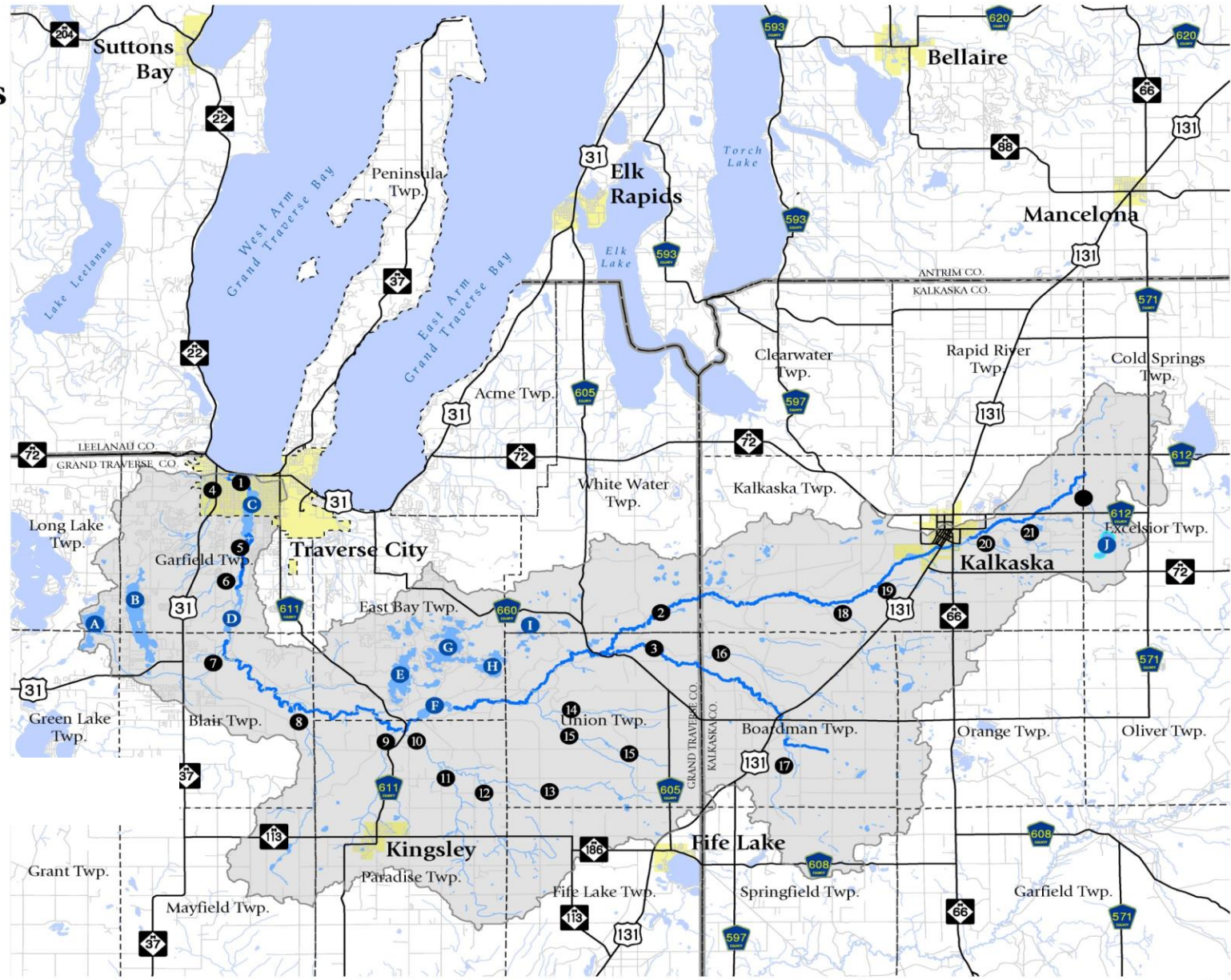
- Boardman River Watershed
- City or Village
- County Boundary
- Township Boundary
- Major Road
- Major Road
- Boardman River

Tributaries:

- 1 Mainstream
- 2 North Branch
- 3 South Branch
- 4 Kids Creek
- 5 Miller Creek
- 6 No Name Creek
- 7 Beitner Creek
- 8 Jaxon Creek
- 9 Swainston Creek
- 10 East Creek
- 11 Jackson Creek
- 12 Bancroft Creek
- 13 Parker Creek
- 14 Carpenter Creek
- 15 Twenty Two Creek
- 16 Taylor Creek
- 17 Albright Creek
- 18 Crofton Creek
- 19 Failing Creek
- 20 Vipond Creek
- 21 Palmer Creek
- 22 Hauenstein Creek

Major Inland Lakes:

- A Bass Lake
- B Silver Lake
- C Boardman Lake
- D Boardman Pond
- E Arbutus Lake
- F Brown Bridge Pond
- G Spider Lake
- H Rennie Lake
- I Island Lake
- J Crawford Lake



180 miles of
river &
tributaries

22
jurisdictions

30% GT Bay
watershed



The Boardman River Watershed Prosperity Plan is a vision & roadmap for the future management of one of Michigan's most beautiful watersheds.

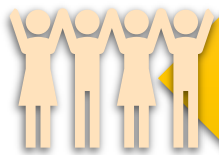




Protect, restore, & enhance the high-quality water & other natural resources that are the backbone of social & economic prosperity in the watershed.



Support a sustainable economy that benefits & strengthens all the watershed communities.

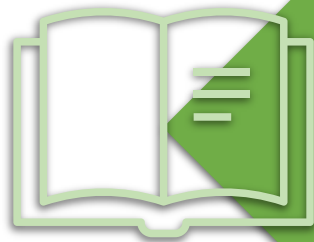


Improve the quality of life & advance greater social equity throughout the watershed to retain & attract businesses, a talented workforce, & student and retiree residents.





Provide managed expansion & improvement of recreation opportunities in the watershed to attract a talented workforce, student and retiree residents, & visitors from around the world.



Through education & engagement efforts, create community ownership of the Prosperity Plan & community capacity that will assure implementation of recommended actions & achievement of the goals & objectives.





The Boardman-Ottaway River Network is dedicated to the preservation, protection, restoration, cultural significance, and sustainable use of the Boardman-Ottaway River and its watershed.

Rename the Boardman River to the Ottaway River; establish it as a legal entity

Install in-stream & riparian habitat

Culvert removal, natural area creation, & connectivity of trails at S. Airport crossing

Annual action plan with goals, metrics, timelines, & organizations responsible

Planning on a watershed-wide basis for zoning, policies, enforcement, ordinances, & procedures

Eliminate parking along the 100-block of Front St.; develop a public space overlooking & connecting the river

Create a sustainable recreation plan

Expand MDNR Natural River designation to the headwaters



The Boardman-Ottaway River Network identified the urgent need to develop a plan for the Boardman-Ottaway River that protects the health of the river ecosystem while providing opportunities for public access & recreational use.

A HEALTHY THRIVING BOARDMAN-OTTAWAY RIVER

Shared definition of a healthy river

Common metrics & shared data

Regular monitoring & reporting on health of river

LEGAL FRAMEWORK FOR THE RIVER

Consistent policies, land use practices, & enforcement across jurisdictions

Shared values across stakeholders

Enforcement mechanisms & incentives

ROBUST EDUCATION PROGRAM

Education & outreach for all groups

Leverage existing educational best practices

Creative content & outreach navigators

DIVERSE SUSTAINABLE FUNDING BASE

Feasible & sustainable funding plan

Active pursuit of diverse funding

Support to oversee & manage

ENGAGED USERS & STAKEHOLDERS

Involved in planning

Involved in implementation

Involved in evaluation & monitoring

RECREATION OPPORTUNITIES FOR USERS OF ALL ABILITIES



Boardman-Ottaway River Network Leadership Team

Conservation Resource
Alliance

Grand Traverse Band of
Ottawa & Chippewa Indians

Grand Traverse
Conservation District

The Watershed Center
Grand Traverse Bay

Traverse City Downtown
Development Authority