

Eurasian Watermilfoil Management Lake Leelanau

16th Annual Freshwater Summit
Hagerty Center
October 27, 2023



“I like the scientific spirit – the holding off, the being sure but not too sure, the willingness to surrender ideas when the evidence is against them: this is ultimately fine – it always keeps the way beyond open – always gives life, thought, affection, the whole man, a chance to try over again after a mistake – after a wrong guess.”

*-Walt Whitman's Camden
Conversations*



Historical Context

2020

- Large biodegradable barriers
- Hand-pulling via SCUBA
- DASH
- Small synthetic blankets

2021

- Large biodegradable barriers
- Hand-pulling via SCUBA
- DASH

2022

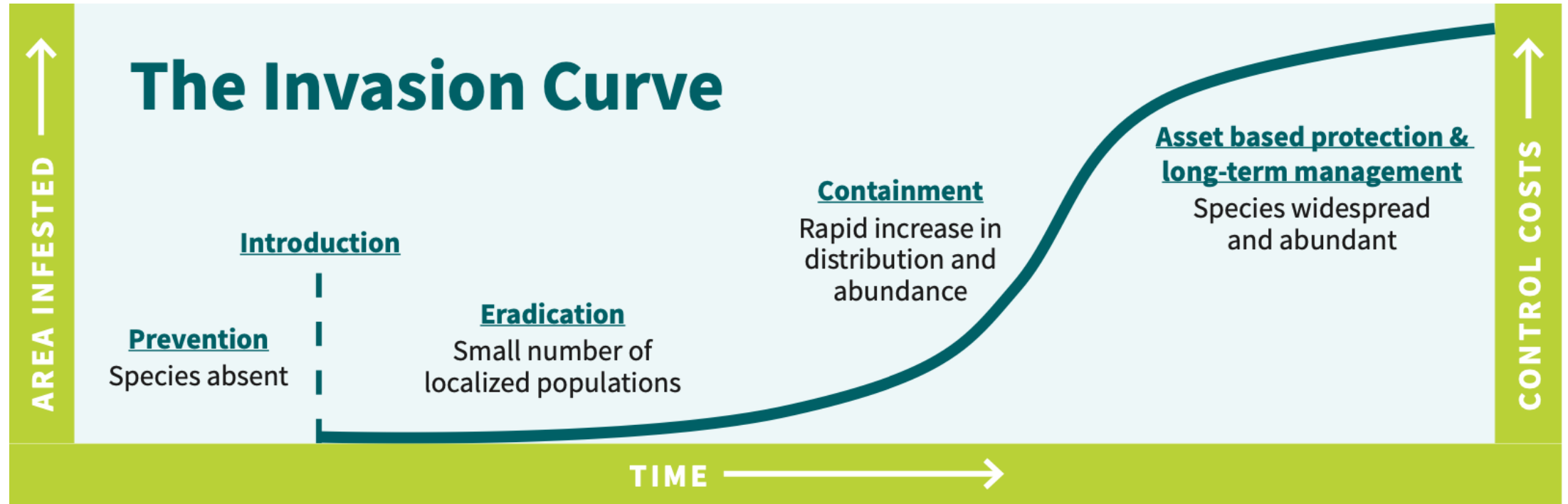
- Large biodegradable barriers
- Hand-pulling using SCUBA
- Micro-barriers

2023

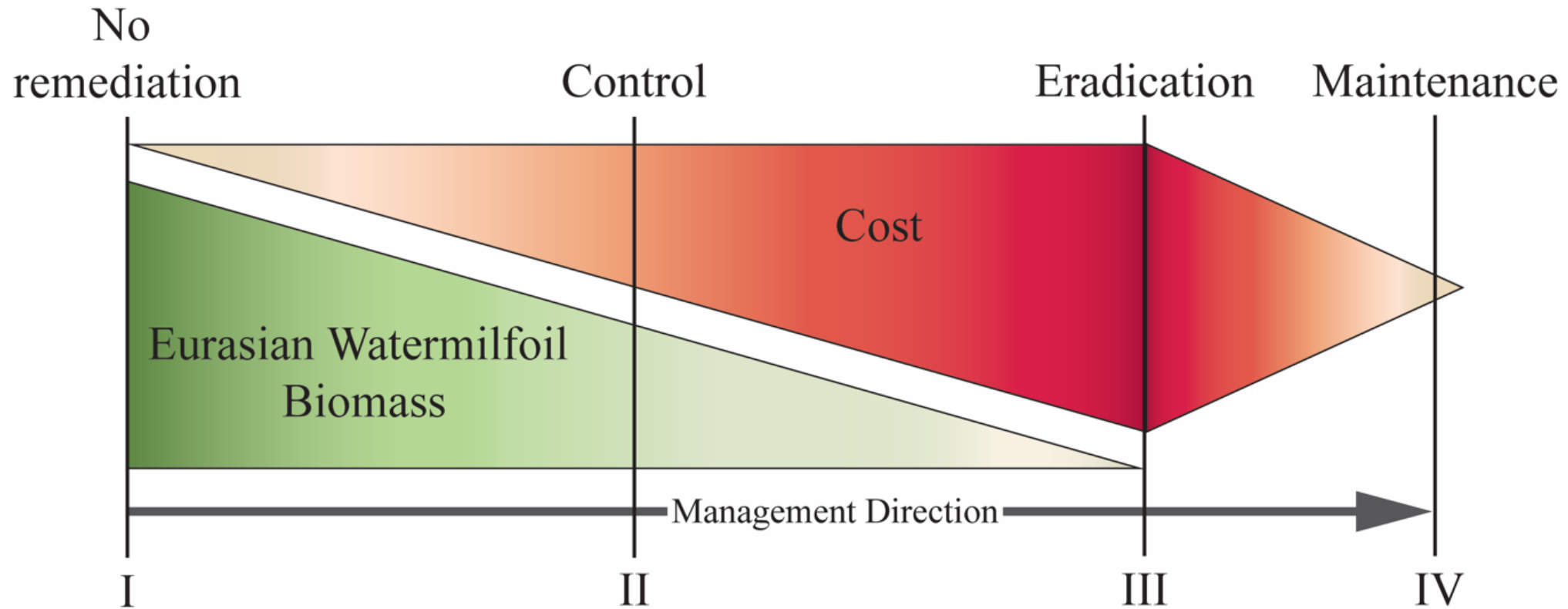
- Large biodegradable barriers
- Micro-barriers



Managing EWM – State of Michigan



LLLA Strategy Shift



2023: Infrastructure & Field Team Development

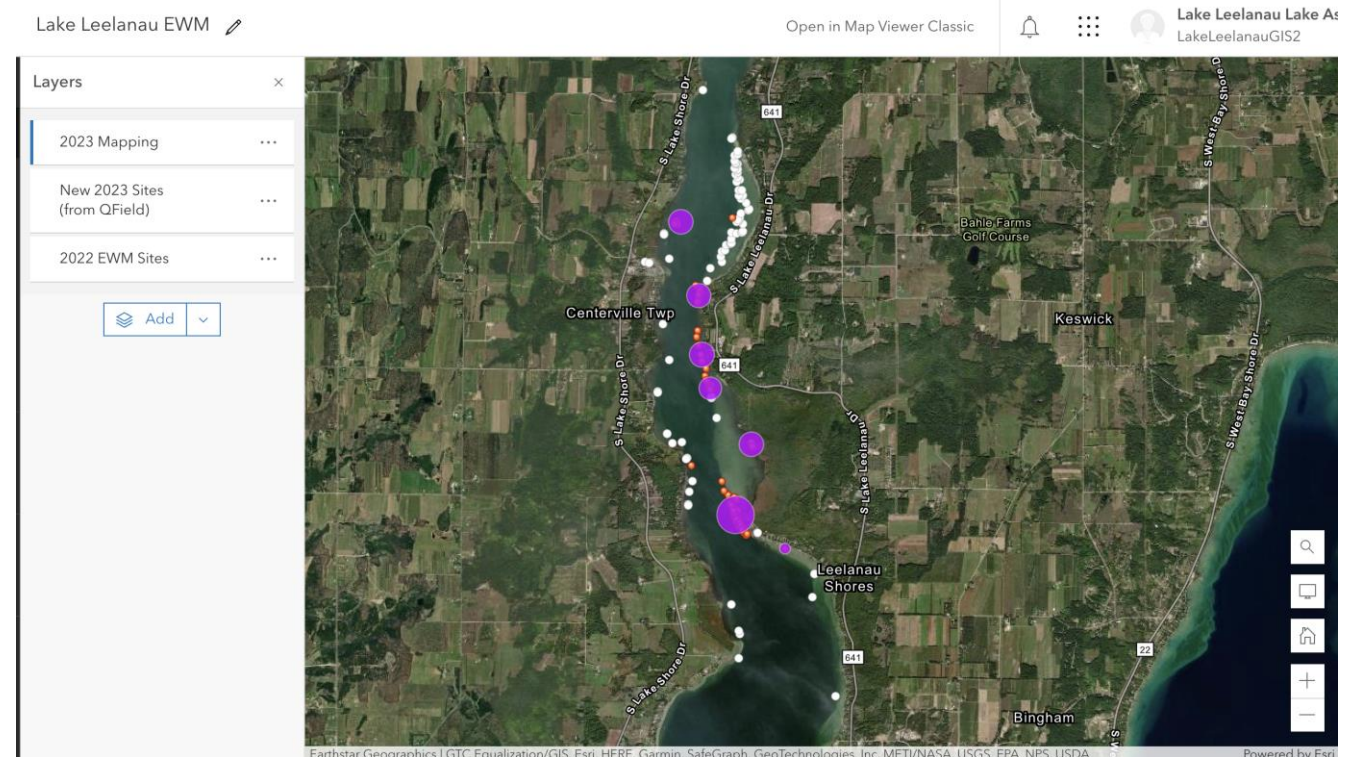


2023: GPS Enhancements

Submeter accuracy with Trimble Catalyst



Advanced mapping capabilities with GIS and
ArcGIS Field Maps



2023: Burlap Placement Advances



2023: EWM Biomass Reduction

- ~4.2 acres of strategically placed burlap barriers
 - Represents only 2.6% coverage of all vascular plants in SLL
 - Represents only 0.19% of total littoral zone in SLL



Important Observations: EWM Encroachment



Important Observations: Native Regrowth in First Season



Important Observations: Multiple-year Regrowth of Native Plants and Algae



Important Observations: Disappearing EWM??

2022



2023



Important Observations: Curly-leaf Pondweed Discovery in SLL



Internet Photos



Ongoing Research with GVSU



Thank You!



Ron Reimink
reiminkron@gmail.com

Annalise Povolo
annalise@lakeleelanau.org



 **Lake
Leelanau**
LAKE ASSOCIATION
lakeleelanau.org